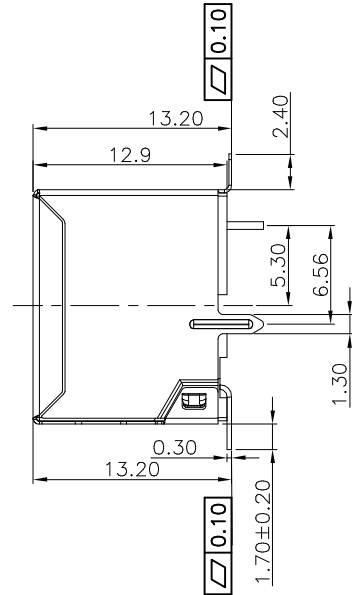
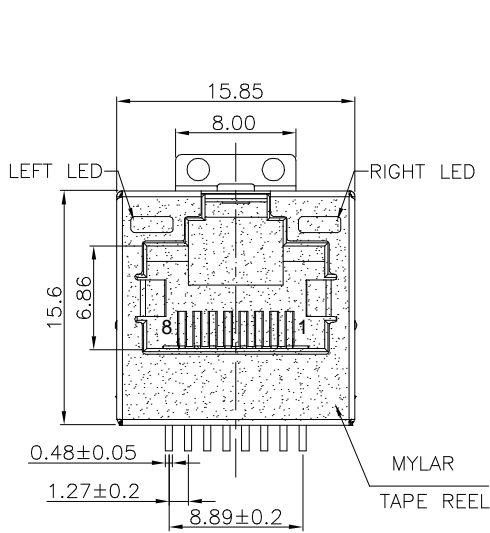


* RoHS COMPLIANT *

* REVISIONS				
LTR	DESCRIPTION	DATE	REVISED	APPROVED



NOTES:

ELECTRICAL:

- VOLTAGE RATING : 125 VAC RMS.
- CURRENT RATING : 1.25 AMP.
- CONTACT RESISTANCE : 40 MILLIOHMS MAX.
- INSULATION RESISTANCE: 500 MEGOHMS MIN @ 500 VDC.
- DIELECTRIC STRENGTH : 500 VDC RMS 50Hz, 1MIN.

MECHANICAL:

- HOUSING MATERIAL : LCP UL94V-0.
- CONTACT MATERIAL : PHOSPHOR BRONZE t=0.30mm.
- SHIELD MATERIAL : C2680, t=0.20mm.
- PLATING : GOLD PLATING OVER NICKEL.
- OPERATING LIFE : 750 CYCLES MIN.
- PCB RETENTION POST-SOLDER: 10 LBS MIN.

ENVIRONMENTAL:

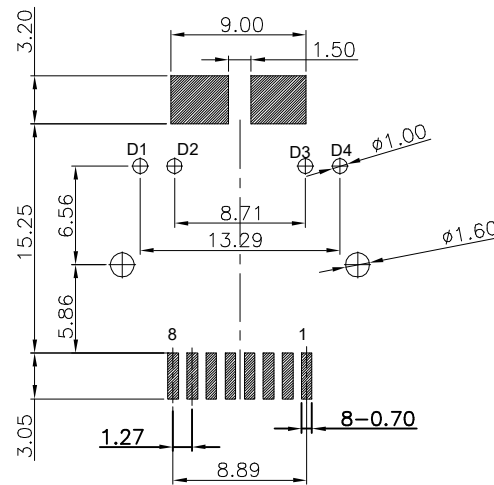
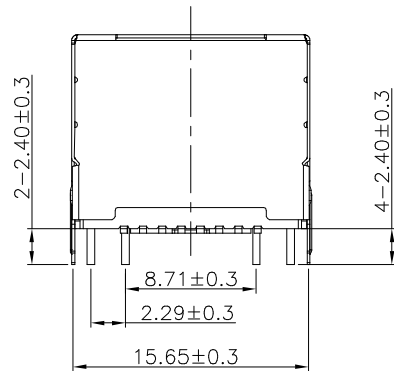
- STORAGE : -40°C TO +85°C.
- OPERATION: -40°C TO +85°C.
- WAVE SOLDERING TEMPERATURE: 250°C~260°C (5~10 SECONDS).
- RoHS COMPLIANT.

MATES WITH MODULAR PLUG CONFORMING TO FCC PART 68, SUBPART F.

JCR-24W15-02-8S01SA2

2- 6u"

01-LED Left: Yellow / LED Right: Green



PCBLAYOUT T=1.6
TOL:±0.05

. LED SPECIFICATION:

YELLOW		GREEN					
D1	+	-	D2	D3	+	-	D4
LEFT LED				RIGHT LED			
LED Color	λ P(nm)	VF @IF=20mA	IR @VR=5V				
GREEN	565	1.8~2.4 V	10 uA max				
YELLOW	585	1.8~2.4 V	10 uA max				

UNLESS OTHERWISE SPECIFIED, TOLERANCE ON DECIMAL: ±0.3

DWN	LILY	DATE	2024.04.12	3RD ANGLE PROJECTION	NAME	TOP ENTRY SMD 8P W/ SHIELD W/ LED
CHKD	ANDY	DATE	2024.04.12		CAT. NO.	JCR-24W15-02-8S01SA2
APVD	JON	DATE	2024.04.12	UNIT: mm	DWN.NO.	EX-24W15-02-8S01SA2 001
JKCR Electronics Co., Ltd.						